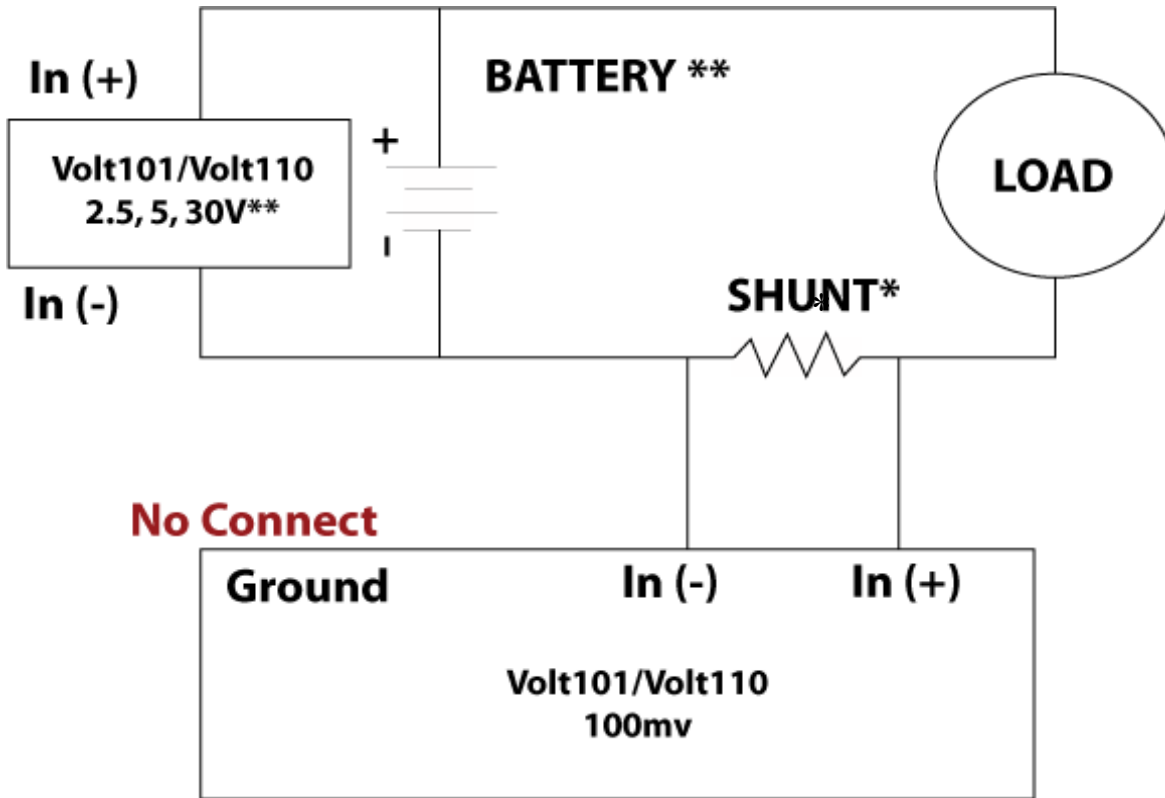


Example Circuit Diagram for Measuring Voltage and Current

- Volt101



*Shunt value depends on the maximum expected load current. For example for a 10A max use a 0.01W shunt.

** Select Voltage range to match maximum battery voltage.

Warnings!

- Do not connect ground terminal of Volt101 $\pm 100\text{mv}$ data logger to ANYTHING. Doing so will damage the logger.
- Disconnect data logger from the circuit BEFORE connecting data loggers to PC Interface cable.

MadgeTech Inc.
 (603) 456-2011 Phone
 (603) 456-2012 Fax
 www.madgetech.com
 support@madgetech.com

6 Warner Road
 Warner NH 03278